

PowerSpector

GTz / GTAz / GDAz



Desktop 3D Automatic Optical Inspection Systems

- √ Revolutionary 3D imaging technology
- √ High Speed 90Fps USB 3 Vision Cameras
- √ 2X FOV over previous Generation
- √ Multi-color 4 angle lighting with Line Source Coaxial Lighting and Meniscus Profiler
- √ Inspects:.....
 - Components: SMT & THT (missing, type, polarity, offset, text, colors, etc.)
 - Component Height and Coplanarity
 - Solder Paste and CIP (Components in Paste; pre-reflow)
 - Soldering: Post Reflow, Post Wave, Selective, Manual
- √ Flexible classification and reporting scenarios.....
- √ Line Sourced DOAL (Direct On Axis Lighting) coaxial lighting system with high resolution Telecentric Optics.....
- √ Low Noise Large CCD High Speed 24 bit Color Camera
- √ Synthetic Imaging and Spectral Analysis.....
- √ Triple use of side camera's
- √ Prototype mode for 1st off inspection
- √ In height adjustable optical head

True 3D imaging, side cameras integrated in 3D processing.

*The latest generation of high speed, high quality cameras
No capture card requirements.*

Up to 50% reduction of cycle time.

reliable solder joint meniscus and pad surface analysis (to find meniscus and paste printing defects)

use inspection in all stages of the production process

integrate AOI efficiently in your existing operations and factory lay-out

inspect solder joints without shadow effects from tall components nearby and accurate inspection model building

find defects easier including printing defects on Gold or Cu plated PCB's

powerful algorithms to achieve an optimal balance between defect detection and false reject levels in shortest time

Use for automatic inspection, classification and repair

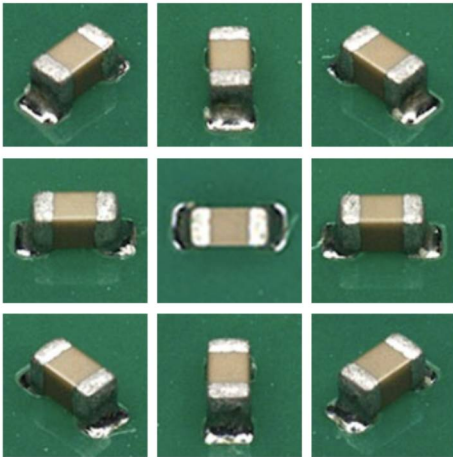
program in minutes to verify your production line is set-up correctly before starting full production

Compensate for PCB warp and adapt to tall component and sandwich assemblies

because inspection matters

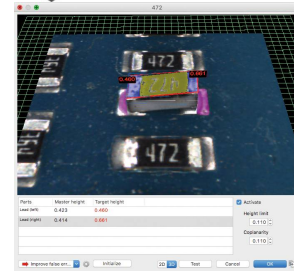
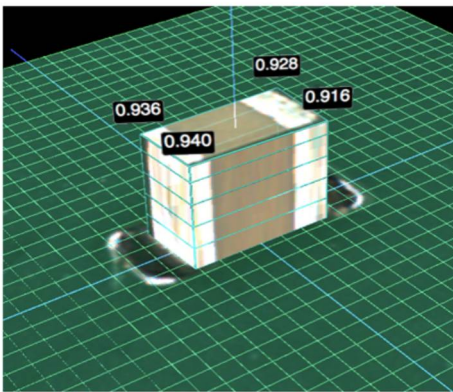
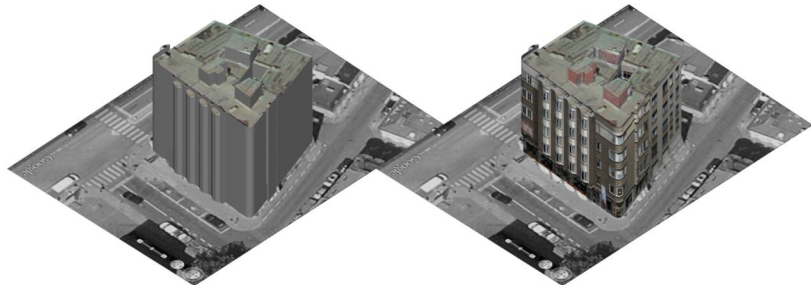
PowerSpector GTz / GTAz / GDAz

Hardware and Software Features



Revolutionary 3D imaging

True Stereoscopic imaging using 9 cameras. Full colour 3D allows the ability to actually see the side of components rather than extruded 2D images. Using the addition of a 4th LED white light

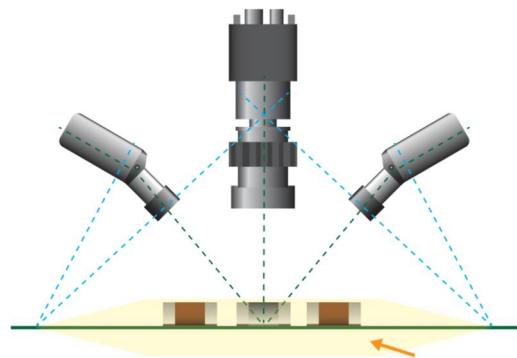


The perfect combination of 3D and 2D inspection

Height, tilt and coplanarity measurement. Pin Height measurement Component Presence Absence, Polarity, Value, Angle, Offset, Colour, Extra part detection, Solder ball detection, Solder profile analysis and short detection. The thickness of chip capacitors in combination with colour makes a more reliable inspection when checking chip capacitors value.

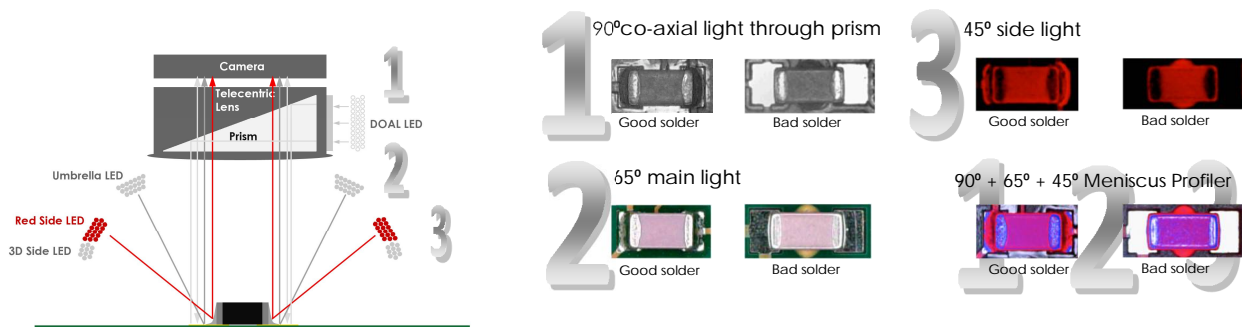
Unique 3D Stereoscopic Vision

Utilizing the full 9 cameras of the MEK camera head. The image differential are merged and a vectorised map of the component is created. Then analyzed based on the programmers applied tolerances. The vectorised map of the components removes the minor imperfection of the component surface giving more accurate measurement of height and surface angle of the component with reduced chance of false readings.



Omnidirectional multi angle, multi color LED lighting

Optimal light no matter component direction — 3D color profile of solder meniscus — Reliable defect decision by the software — Decide Good Solder, No Solder, Lack of Solder and Too much solder for SMT and THT solder joints

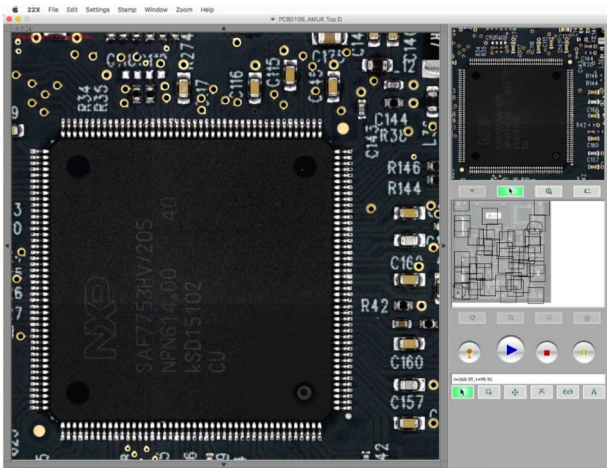


8x Angular Side Sensors (Only available for FDA and FDAz models)

Simultaneously operating, multiplexed side view sensors with CameraLink interface — 45/45 arrangement — Triple use: Active automatic inspection, classification and repair — clear 9 angles defect review — high magnification 50x (10µm/pixel) — Full Color — Auto highlight — Large sensor pixels — 9 view images also in backup database

PowerSpector GTz/GTAz/GDAz

Hardware and Software Features — Continued



Double size FOV (Field of view)

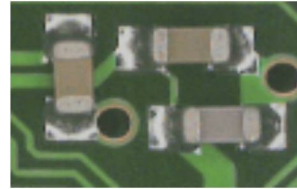
Up to 2x faster inspection over previous generations of machines. Square FOV combined with circular lighting allows for program rotation without time consuming debugging.

Large pixel image capturing sensor

18.8µm² pixel size — less noise — smooth and detailed image— great dynamic range



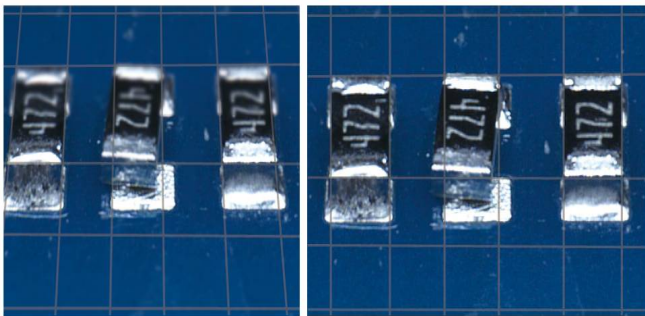
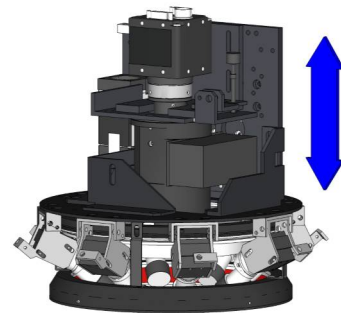
High dynamics sensor



Conventional sensor

In Height Adjustable Optical Head

In Z-Axis moving Top Camera, Light and Side View cameras — Adaption to any PCB Thickness — PCB Warp Compensation — Inspection of PCB's with very tall components — Reliable text and/or polarity inspection on tall components
Inspection of "Sandwich" assemblies without need of jigs and multiple inspections

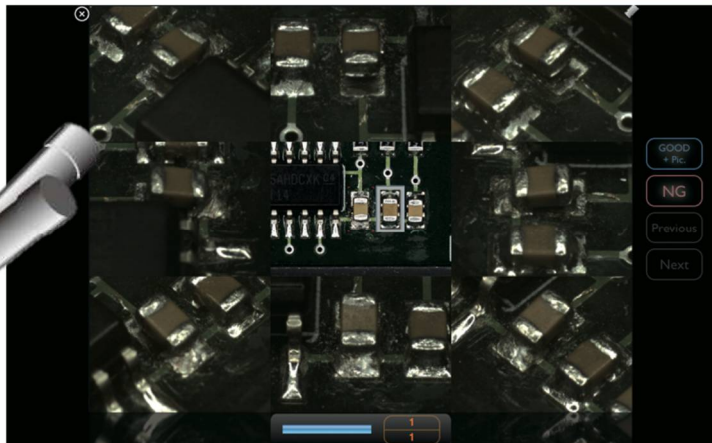
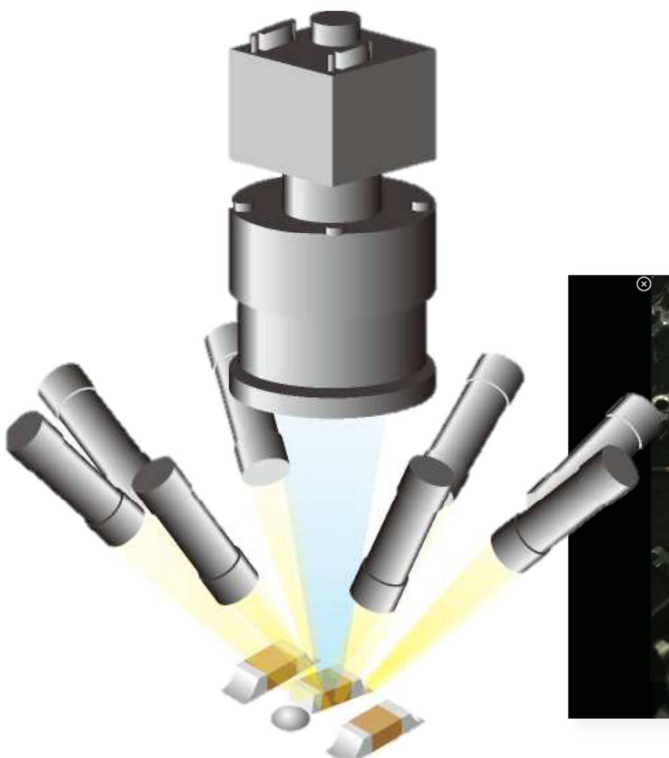
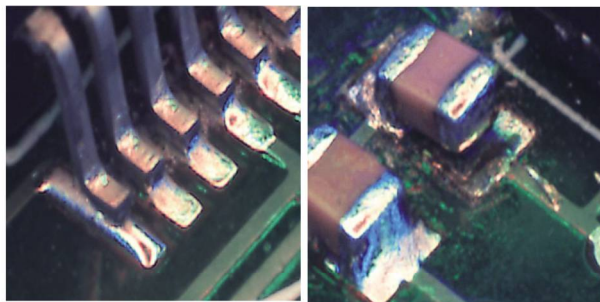


Without Shift&Tilt

Shift&Tilt

Shift & Tilt Side View lenses

Distortion free side images across whole FoV. Every point on the PCB within the FoV has same distance to the capturing sensor despite the angle of the optics



Desktop

PowerSpector

GTaz/GDAz 350, 520, 650, 800

Desktop Series Specifications	PowerSpector GTaz 350	PowerSpector GTaz 520	PowerSpector GTaz 650	PowerSpector GTaz 800
Maximum PCB Size	350x250mm (13.8" x 9.8")	520x460mm (20.5" x 18.1")	650x550mm (25.6" x 21.6")	800x550mm (31.5"x21.6")
Note: GDAz Max. PCB Size is slightly smaller due to larger diameter optical unit				
Characteristics				
Product type	Automatic Optical Inspector			
In-line/Off-line	Off-Line			
Camera movement	X Direction	X + Y Direction	X + Y Direction	X + Y Direction
PCB movement	Moving in Y	Stationary	Stationary	Stationary
PCB fixation	Direct Loading	Direct Loading	Manual Drawer Options: Motorized Drawer, Transverse loader	Manual Drawer Options: Motorized Drawer, Transverse loader
Parts inspection	Presence, Polarity, Offset, Correctness, Soldering, Height			
Printing/paste inspection	Offset, Smearing, Bridges, Uniformity			
Image Processing	Synthetic Imaging, Spectral Analysis, Greyscale limits			
Image Parameters	Brightness, Hue, Saturation via Filters			
Camera type	Digital color Thunderbolt interface 90 Fps			
Camera Field Of View/Resolution	38.5x38.5mm(1.52"x1.52")/18.75µm or 19.5x19.5mm(0.77"x0.77")/10µm			
Lens	Telecentric lens with built in prism for DOAL Lighting			
Lighting system	Omnidirectional Quad LED rings: Side White, Side Red, Main, Line Sourced DOAL Diffused On Axis Lighting (Coaxial))			
Specifications				
Minimum inspection component size	01005" (0.4x0.2mm)(10µm resolution)			
Positioning accuracy	Pixel related Feedback Loop			
Component clearance (top)	GTaz 30mm (1.2")/ GDAz 60mm (2.4")			
Side Cameras	8x Digital color USB 3.0 Vision in 45/45 orientation			
Z-Axis movement range	30mm (1.2")			
Component clearance (bottom)	70mm (2.8")	70mm (2.8")	70mm (2.8")	70mm (2.8")
Movement speed	720mm/s			
Inspection capacity typical	2750ppm			
Electrical Requirement	100-240 VAC / 150W			
Interfacing				
Control PC type	Apple Mac Mini or iMac			
Data interface	USB and Thunderbolt			
Programming Interface	CSV Centroid File (Placement Data)			
Repair/Monitor/SPC System/MES-interface	Mek Catch System (Windows 7/8/10) (option)			
3rd party Interfacing (MES) & Data Storage	Enterprise SQL DB/XML Files/Socket (Catch System Option)			
General				
Operating temperature	15-30 deg. C(60-90 deg. F)			
Operating humidity	15-80 % RH			
External size	W736 x D874 x H450 (29.0" x 34.4" x 7.7")	W1110 x D1040 x H600 (43.7" x 50" x 23.6")	W940 x D1015 x H500 (37.0" x 34.0" x 19.7")	W1157 x D1015 x H500 (45.55" x 34.0" x 19.7")
Weight	65kg (143lbs)	200kg (350lbs)	110kg (243lbs)	120kg (265lbs)

Mek Europe reserves the right to change the design and specifications without notice. © Mek Europe BV, October 2019

Represented/Distributed by:

Mek Americas LLC
5550 Painted Mirage Rd., STE 320
Las Vegas, NV 89149 USA
T +1 702 818 1706

info@marantz-electronics.com, www.marantz-electronics.com

Marantz Electronics, Ltd.
4th floor, Hi-Tech Center, YBP, Hodogaya-ku
Yokohama-city, Kanagawa, 240-0005 Japan

mek
marantz electronics ltd

Mek Europe BV
Polluxstraat 2b
5047 RB Tilburg, Netherlands
T +31 40 7114111

info@mek-europe.com, www.mek-europe.com

because inspection matters

Desktop

PowerSpector

GTz 350, 520, 650, 800

Desktop Series Specifications	PowerSpector GTz 350	PowerSpector GTz 520	PowerSpector GTz 650	PowerSpector GTz 800
Maximum PCB Size	350x250mm (13.8" x 9.8")	520x460mm (20.5" x 18.1")	650x550mm (25.6" x 21.6")	800x550mm (31.5"x21.6")
Characteristics				
Product type	Automatic Optical Inspector			
In-line/Off-line	Off-Line			
Camera movement	X Direction	X + Y Direction	X + Y Direction	X + Y Direction
PCB movement	Moving in Y	Stationary	Stationary	Stationary
PCB fixation	Direct Loading	Direct Loading	Manual Drawer Options: Motorized Drawer, Transverse loader	Manual Drawer Options: Motorized Drawer, Transverse loader
Parts inspection	Presence, Polarity, Offset, Correctness, Soldering, Height			
Printing/paste inspection	Offset, Smearing, Bridges, Uniformity			
Image Processing	Synthetic Imaging, Spectral Analysis, Greyscale limits			
Image Parameters	Brightness, Hue, Saturation via Filters			
Camera type	Digital color Thunderbolt interface 90 Fps			
Camera Field Of View/Resolution	38.5x38.5mm(1.52"x1.52")/18.75µm or 19.5x19.5mm(0.77"x0.77")/10µm			
Lens	Telecentric lens with built in prism for DOAL Lighting			
Lighting system	Omnidirectional Quad LED rings: Side White, Side Red, Main, Line Sourced DOAL Diffused On Axis Lighting (Coaxial))			
Specifications				
Minimum inspection component size	01005" (0.4x0.2mm)(10µm resolution)			
Positioning accuracy	Pixel related Feedback Loop			
Component clearance (top)	50mm (2.0")			
Side Cameras	No Side Cameras			
Z-Axis movement range	30mm (1.2")			
Component clearance (bottom)	70mm (2.8")	70mm (2.8")	70mm (2.8")	70mm (2.8")
Movement speed	720mm/s			
Inspection capacity typical	2750ppm			
Electrical Requirement	100-240 VAC / 150W			
Interfacing				
Control PC type	Apple Mac Mini or iMac			
Data interface	USB and Thunderbolt			
Programming Interface	CSV Centroid File (Placement Data)			
Repair/Monitor/SPC System/MES-interface	Mek Catch System (Windows 7/8/10) (option)			
3rd party Interfacing (MES) & Data Storage	Enterprise SQL DB/XML Files/Socket (Catch System Option)			
General				
Operating temperature	15-30 deg. C(60-90 deg. F)			
Operating humidity	15-80 % RH			
External size	W736 x D874 x H450 (29.0" x 34.4" x 7.7")	W1110 x D1040 x H600 (43.7" x 50" x 23.6")	W940 x D1015 x H500 (37.0" x 34.0" x 19.7")	W1157 x D1015 x H500 (45.55" x 34.0" x 19.7")
Weight	65kg (143lbs)	200kg (350lbs)	110kg (243lbs)	120kg (265lbs)

Mek Europe reserves the right to change the design and specifications without notice. © Mek Europe BV, October 2019

Represented/Distributed by:

Mek Americas LLC
5550 Painted Mirage Rd., STE 320
Las Vegas, NV 89149 USA
T +1 702 818 1706

info@marantz-electronics.com, www.marantz-electronics.com

Marantz Electronics, Ltd.
4th floor, Hi-Tech Center, YBP, Hodogaya-ku
Yokohama-city, Kanagawa, 240-0005 Japan

mek
marantz electronics ltd

Mek Europe BV
Polluxstraat 2b
5047 RB Tilburg, Netherlands
T +31 40 7114111

info@mek-europe.com, www.mek-europe.com

because inspection matters