

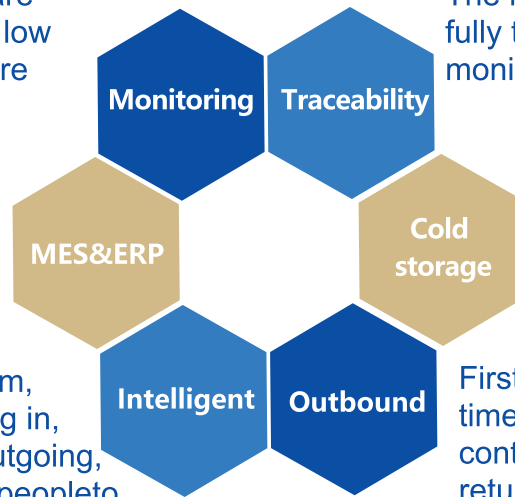


# Solution for Intelligent Solder Paste Cabinet

The products inside the cabinet are monitored by 24H\*365 days with low inventory warning and temperature abnormality alarms.

Interconnected with MES and ERP system, reports generated.

Integrated design, face recognition/fingerprint login system, automatic code scanning, weighing in, refrigeration, warming, stirring, outgoing, labeling, reducing the number of people to manage risks from uncontrollable factors



The information of each solder paste is fully traced and the LOG record can be monitored.

Refrigerated at 0-10°C with various types of solder paste.

First in, first out according to storage time or serial number, production date control within the time domain and return to deposit preferentially.

## Parameters

Classification	Model	TS-1000	TS-3000	TS-6000	TS-5000
Store	Storage type	Solder paste in cans			Solder paste in cans & Red glue
Cold storage	Maximum quantity for cold storage	120 cans	300 cans	600 cans	Solder paste (345 cans)& Red gule (50 cans)
	Cold storage temperature	0°C-10°C			
Rewarming	Maximum quantity for temperature rewarming	20 cans	72 cans	104 cans	Solder paste (54 cans)& Red gule (25 cans)
	Temperature rewarming	18°C-28°C			
Stirring	Stirring quantity	1 or 2 cans			
	Stirring speed	1~1000 revolutions/minute			
	Stirring time	0.1-99h (Adjustable)			
	Stirring mode	The combination of orbital revolution and self-rotation generates centrifugal force			
Feeding and discharge	Access rules	First In, First Out (FIFO)/ Priority for second feeding			
	Barcode type	Bar code/QR code			
	Scanning mold	Automatic code reading			
Other	Functions	Labeling,face/fingerprint login,user management			
	Control mode	Industrial PC & Motion control card			
	Dimension	1330*1200*1900mm	1570*1420*1900mm	2070*1500*1900mm	1575*1420*1900mm
	Weight	500KG	600KG	700KG	600KG
	Power supply	AC220±10% 50/60HZ 2.0KW	AC220±10% 50/60HZ 2.0KW	AC220±10% 50/60HZ 3.0KW	AC220±10% 50/60HZ 3.0KW

## » Advantages

### First In, First Out (FIFO)

Single bottle continuous feeding design, absolutely FIFO. Sorting done by feeding time or serial number.

### Visualization

Built-in monitoring system to monitor the operation in real time and traceable.

### Temperature Uniformity

The large-capacity refrigeration layer is designed with upper and lower through holes to ensure minimal loss of cold air.

Temperature uniformity, real-time temperature digital display and graph display

### Weighing

If the solder paste is remains, it will be weighed when it is put into storage again and priority taken out for next time.







### Material Changeover Mode

After a new production line or the line is changed, the product information is bound to the line and the material receiving mode is entered. When the solder paste is exhausted, scan the code of previous product and the system will accurately allocate new products to the production line. This system realizes intelligent closed-loop control of the entire process of production lines, personnel, and code replacement, significantly improving the efficiency and accuracy of production operations.

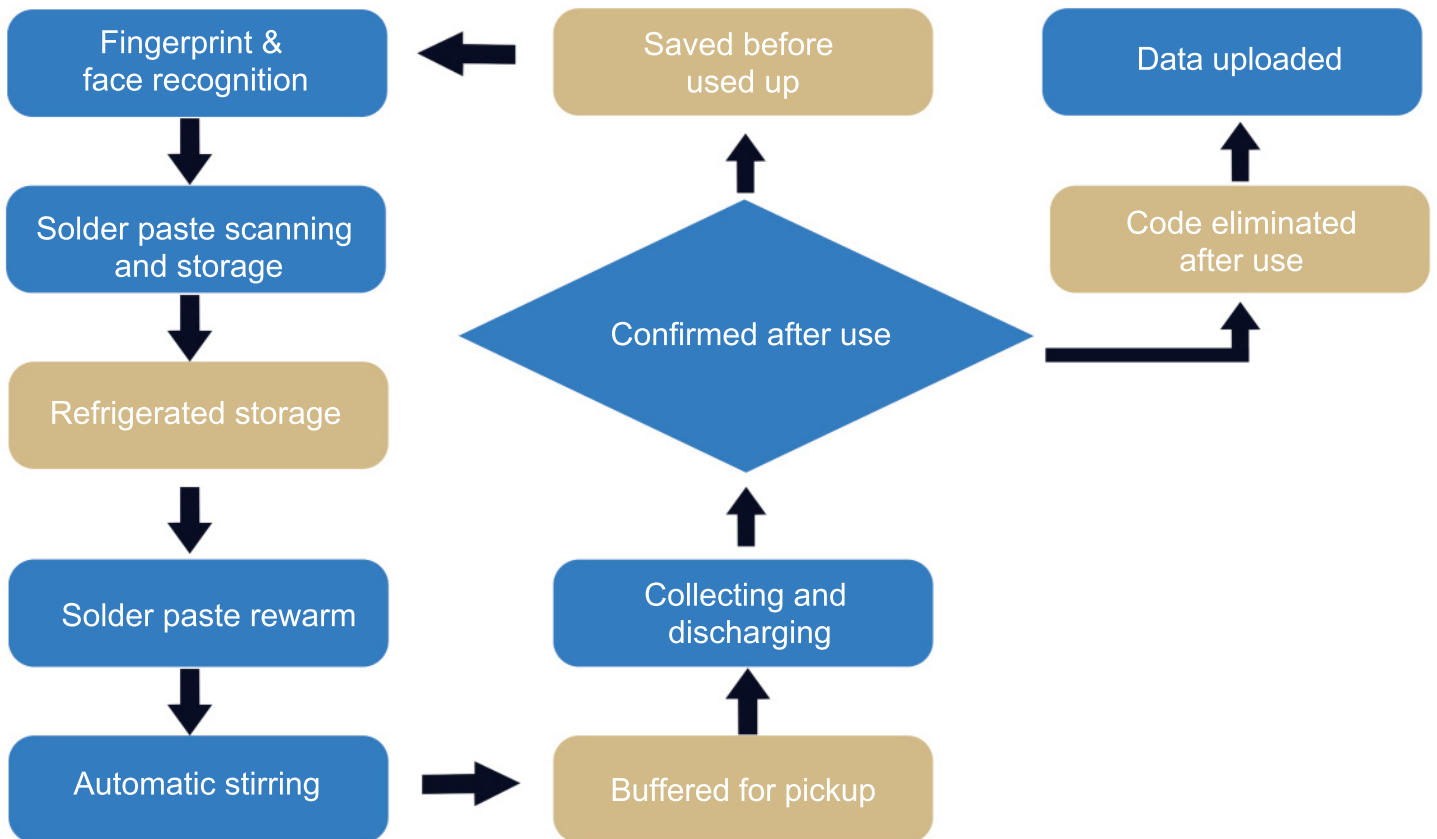
### Stability

Adopting a bus-type network control system and standardized protocols to ensure efficient communication. Modular electronic control subdivision function, independent and low coupling, easy for maintenance and expansion. Fully closed-loop servo system ensures high-precision operation. Key information is presaved in real time, so there is no risk of data loss due to sudden power outage. It can be restored immediately after power is turned on, improving productivity.

## Value-in-Use Analysis

-  Reduce manual management and reduce uncontrollable risks caused by human factors
-  Make reservations in advance to reduce waiting
-  Connected with MES, ERP and other systems to improve management efficiency
-  Intelligent management reduces inactive waste
-  Unattended in 24H\*7 days
-  Reports can be generated and products can be traced to assist production

## Workflow



**SHENZHEN PEMS ELECTRONICS CO., LTD**

**Web:** <https://www.sz-pems.com>

**Tel:** 0755-27958949 27958841

**E-mail:** [Christy@ttsz.com](mailto:Christy@ttsz.com)

**ADD:** 601, Building A, Nanchang Community, New Retail Digital Industrial Park, Xixiang Street, Bao'an District, Shenzhen