

Global Strength

BTU provides world-class service and customer support in over 30 countries around the globe.



- ★ BTU Production and Engineering Facilities
- BTU Regional Locations
- BTU Representatives

- 24/7 Worldwide Customer Support
- Manufacturing and Engineering in the US and China
- Process Applications Laboratories in the US and China
- Multiple Global training locations



Headquarters | United States

BTU International, Inc
10 Liberty Way, Suite 100,
Westford, MA 01886, USA
T 1-978-667-4111
F 1-978-667-9068
btusales@amtechsystems.com



Europe

BTU Europe Ltd., UK
T +44 (0) 1252 660010
F +44 (0) 1252 660011
salesbtuuk@amtechsystems.com



Asia Pacific

BTU Shanghai, China
T +86-21-58669098
F +86-21-58669231
btuasias@amtechsystems.com

To contact BTU please go to www.btu.com/support-contact-sales.htm

www.btu.com

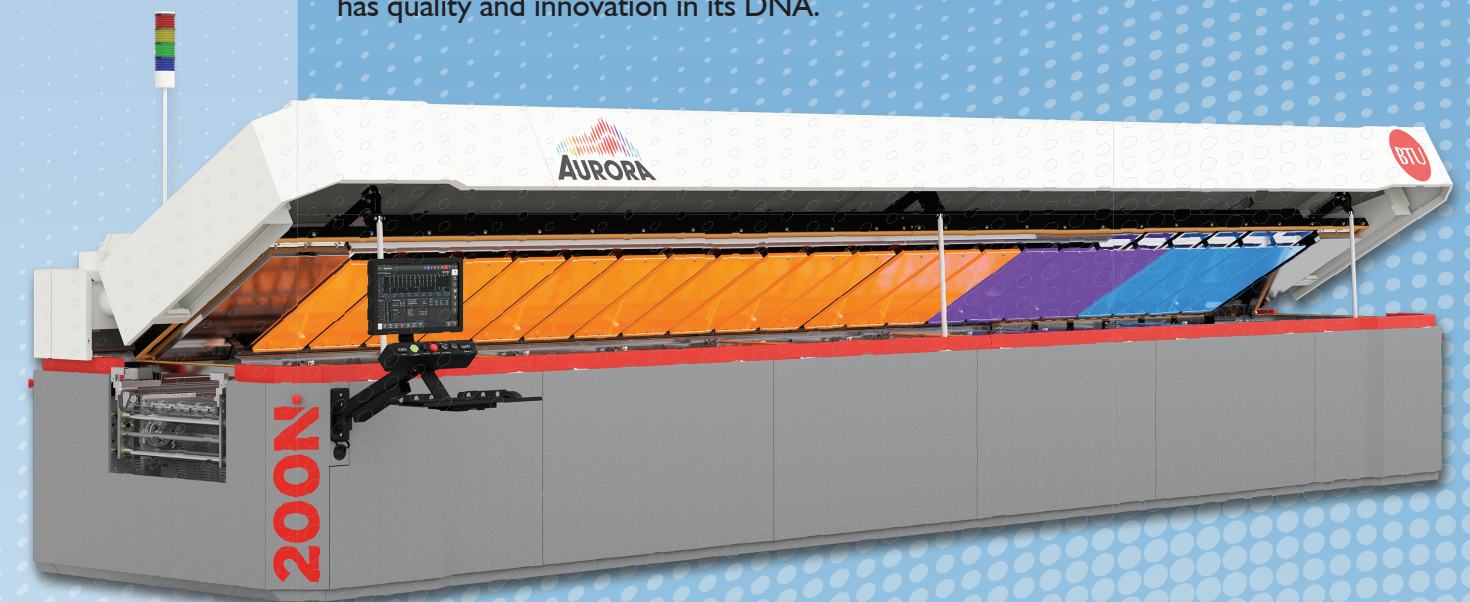


AN AMTECH COMPANY



REFLOW IN A NEW LIGHT

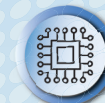
Aurora is leading the way to the factory of the future by seeing reflow in a new light. Aurora, the newest reflow oven platform, from BTU is designed based on years of expertise and leadership from the makers of the industry's best performing reflow ovens. As the latest in a long line of world-class thermal systems, Aurora has quality and innovation in its DNA.



SMT Reflow



Curing

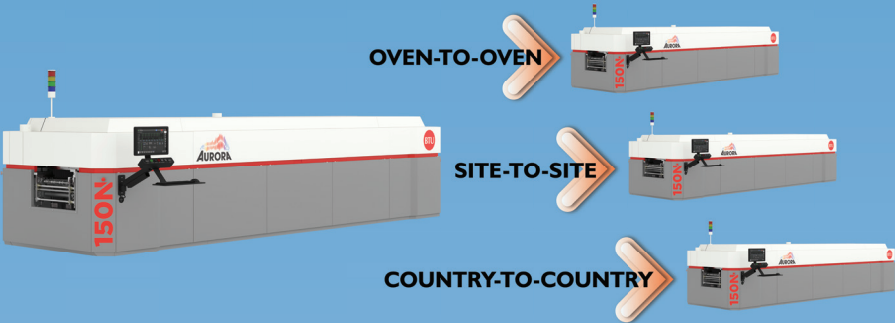


Semi Pack

Aurora systems feature a modern, fully updated user interface, integrated Aqua Scrub™ flux management technology, innovative Smart Power energy savings software, and advanced process control technologies. Aurora's combination of superior thermal performance, process flexibility, and vision for the future sets the new standard for reflow ovens today - and for tomorrow.

SUPERIOR THERMAL UNIFORMITY

- BTU's exclusive Closed Loop Convection Control provides maximum flexibility in process control.
- Side-to-side recirculation enhances temperature uniformity
 - Guaranteed process repeatability, system-to-system, site-to-site, country-to-country
 - Unmatched convection efficiency reduces zone temperature set-points.



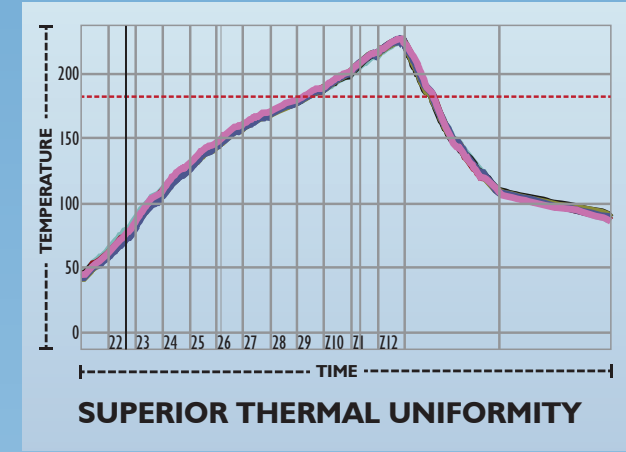
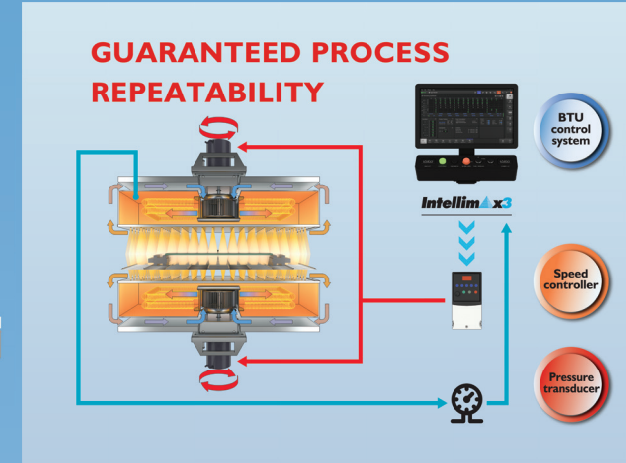
CONFIGURABLE HEATING AND COOLING ZONES

- The Aurora has a first of its kind feature whereby customers can configure additional heating and cooling zones at the time of order – allowing for slower cooling ramp rates, or more throughput for lighter products. This allows customers to solve critical process or productivity issues within the same footprint of the original Aurora design.
- Convert heating to cooling zones and vice versa
 - Configured at time of order in two zone increments



Model	AURORA125N50		AURORA150N50		AURORA175N75		AURORA200N75	
Atmosphere	Nitrogen		Nitrogen		Nitrogen		Nitrogen	
Dimensions	Inches	Millimeters	Inches	Millimeters	Inches	Millimeters	Inches	Millimeters
Conveyor Speed	10-100/min	254-2540/min	10-100/min	254-2540/min	10-100/min	254-2540/min	10-100/min	254-2540/min
Conveyor Width	24.4	620	24.4	620	24.4	620	24.4	620
Heated Length	125	3175	150	3810	175	4445	200	5080
Heated Zones (Top/Bottom)	10/10		12/12		14/14		16/16	
Cooling Length	50	1270	50	1270	75	1905	75	1905
Cooling Zones	4		4		6		6	
Total System Length	230.4	5852	255.3	6484	305.6	7762	330.5	8394
Total System Width	71.65	1820	71.65	1820	71.65	1820	71.65	1820
“Total System Height (assumes 36” hearth line)	62.8	1595	62.8	1595	62.8	1595	62.8	1595
Product Clearance	3.15	80	3.15	80	3.15	80	3.15	80
Voltage Range	208-480 VAC		208-480 VAC		208-480 VAC		208-480 VAC	

COST OF OWNERSHIP PERFORMANCE + INNOVATION



MINIMIZED COST OF OWNERSHIP

- In the Aurora reflow oven, maintenance access, oven contamination, input power and process gas usage have all been improved and optimized to deliver the absolute minimum in Cost of Ownership.
- Fully integrated Aqua Scrub flux management system with built-in waste removal
 - Ease of access for maintenance and repair
 - Smart Power and Energy Pilot software included in the control system
 - Optimized gas flows

Aqua Scrub FULLY INTEGRATED ADVANCED FLUX MANAGEMENT SYSTEM

The Aqua Scrub is a proprietary flux management system which employs a water-based rinse agent to continuously scrub contaminants from the oven atmosphere. This fully automatic system works regardless of flux type, and enables a “hands-off” approach to oven maintenance.

ADVANCED CONVEYOR OPTIONS

- Up to 5 movable rails
- Dual lane, dual speed
- Dual center support engagement system
- Chain return path within rail for less power consumption
- Single platform to improve configurability and common parts
- Wider board capabilities
 - 620 mm (24.4 in.) single lane
 - 305 mm (12.0 in.) per lane/dual lane
- 80 mm (3.15 in.) total product clearance

WINCON 8

Aurora utilizes an updated SEMI E95 style interface to manage the industry’s most powerful oven control system. The dynamic combination of Wincon 8 with the Aurora family of reflow ovens incorporates proprietary software developed to streamline thermal performance leading to shorter start-up cycles, decreased maintenance costs and lower down-time. Using light or dark mode and customizable email and/or SMS text notifications highlight the intuitive and user-friendly software updates.

CUSTOMER SERVICE AND WARRANTY

- BTU's quality products are backed by its Industry leading comprehensive warranty.
- Lifetime on heaters and blowers
 - 3 years system
 - 1 year labor
- To enhance uptime the Aurora platform is supported by BTU's 24-hour, 7-Day Worldwide customer support, and electronic user documentation.

Wincon™ 8

THE INDUSTRY'S MOST POWERFUL OVEN CONTROL SYSTEM

EXCLUSIVE ENERGY SAVING SOFTWARE



- Reduces peak power usage allowing for lower connected load
- Optimizes power use automatically within an overall given %
- Allows for fastest start-up/response while total power is limited



- Automatically reduces reflow oven operating costs
- Takes advantage of idle time
- Quick recovery using SMEMA or remote sensor



- Redundant process monitor
- Enables product traceability when used with a bar-code reader
- Fully integrated with MES/factory communication